



Live the life you so
richly deserve.



A new way to feel more at home.

In many ways, life at MerryWood on Park is just what you would imagine. Spacious apartments. A caring staff. The beautiful, North Carolina surroundings. But it only takes a slightly deeper look to discover that it offers all those things and so much more.

MerryWood on Park is operated by Bridge Senior Living. Which means we go beyond the expected. We strive to care more. To innovate more. To inspire more. All to help you create a lifestyle that is as abundant and fulfilling as you dare to dream.





The beauty of North Carolina inside and out.



MerryWood on Park is tucked in a peaceful yet convenient residential neighborhood just south of downtown Charlotte. You're never far from whatever you want, be that a relaxing night at home or an evening show in town.

Where are we?

3600 Park Rd.

Charlotte, NC 28209

866-421-1920





IMAGE OF THE CHARLOTTE, NC SURROUNDING AREA

A woman with her hair in a bun is hugging an elderly woman from behind. The elderly woman has short, light-colored hair and is wearing a patterned top. The background is a blurred indoor setting. The entire image is overlaid with a semi-transparent dark blue filter.

A sanctuary for every season.

On the journey of life, we sometimes get to choose our paths, and sometimes we encounter unexpected detours that lead to new adventures.

As a Bridge Senior Living community, MerryWood on Park helps create rewarding lifestyles for all our residents. With Independent Living, Assisted Living, and Respite Care options, along with round-the-clock expert health services and support, life here always fosters a sense of serenity, safety, and satisfaction.



Independent Living

Home is where the heart is and the hard work isn't.

Whether you call it maintenance-free, worry-free, or stress-free, the key word in all those descriptions is “free.” Because that’s what Independent Living at MerryWood on Park is all about – giving you freedom from the worry and responsibility of house ownership, and the freedom to do, well, whatever you like.

A few features of Independent Living at MerryWood on Park include:

- *Full-service dining facilities with chef-prepared meals for those times when you choose not to cook in your fully equipped kitchen*
- *Weekly – and thorough – housekeeping*
- *The peace of mind of knowing that daily assistance is just moments away*
- *Arranged transportation for shopping and appointments off-site*
- *Activities, events, and programs that you’re sure to enjoy*

We offer five different Independent Living floor plans, ranging from studio/1-bath to 2-bedroom/2-bath.

All are quite spacious, so there's always plenty of room for friends and family to gather.

Starting at \$2,995

All apartments include:

- *Individual thermostat controls*
- *Modern kitchens with full-size appliances*
- *Washers and dryers in each apartment*
- *Utilities (electricity, water, telephone)*
- *Housekeeping*
- *Trash service*
- *Pest control*
- *No property taxes*

If you think moving in means leaving your furry loved one behind, it doesn't. All apartments at MerryWood on Park are pet-friendly.



The Euclid

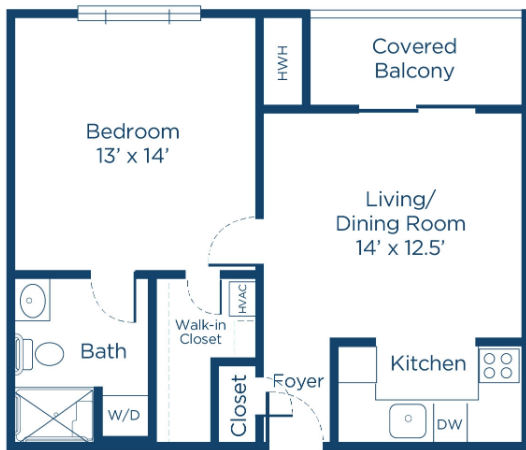
566 sq. ft. — 0 Bedroom/1 Bath



Independent Living

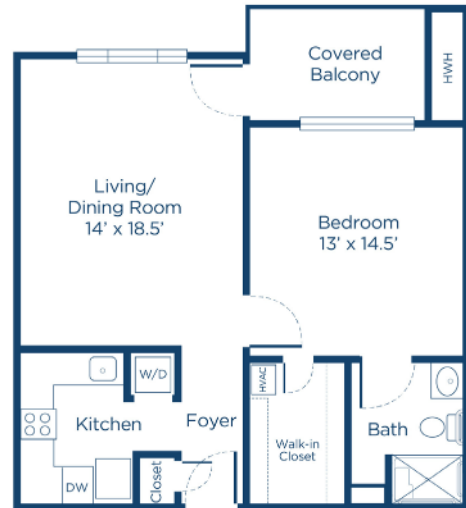
The Radcliffe

621 sq. ft. — 1 Bedroom/1 Bath



The Sterling

796 sq. ft. — 1 Bedroom/1 Bath



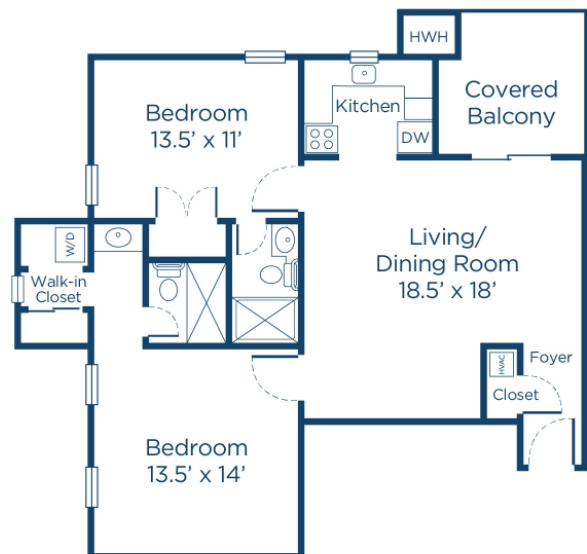
The Sherwood

900 sq. ft. — 1 Bedroom/1 Bath



The Worthington

1011 sq. ft. — 2 Bedroom/2 Bath





Your desire to stay active can still be fulfilled, thanks to the expert care of MerryWood on Park's friendly professionals.

Assisted Living

A helping hand toward a happier life.

With the support of friends and family, aging successfully is rarely a solitary achievement. But sometimes, the need for more consistent help arises. Fortunately, your desire to stay active can still be fulfilled, thanks to the expert care of MerryWood on Park's friendly professionals.

Naturally, help is available daily, so your security is ensured. We also feature an emergency response system, daily check-ins, and a medication management service so you never have to worry about what to take or when.

A few other common ways our associates assist with daily activities include:

- ***Assistance with bathing and dressing as needed***
- ***Help getting in and out of bed***
- ***Help getting to meals and other activities***
- ***Additional assistance at mealtime if needed***
- ***Discreet personal care whenever needed***

For Assisted Living residents, we offer five different floor plans ranging from studio/1-bath to 2-bedroom/2-bath.

Like all of our apartments, they feature an open, contemporary layout along with modern appliances.

Starting at \$5,995
All apartments include:

- Individual thermostat controls
- Modern kitchens with full-size appliances
- Washers and dryers in each apartment
- Utilities (electricity, water, telephone)
- Housekeeping
- Trash service
- Pest control
- No property taxes

Of course, they're pet-friendly too.

*Additional costs may apply.



The Euclid

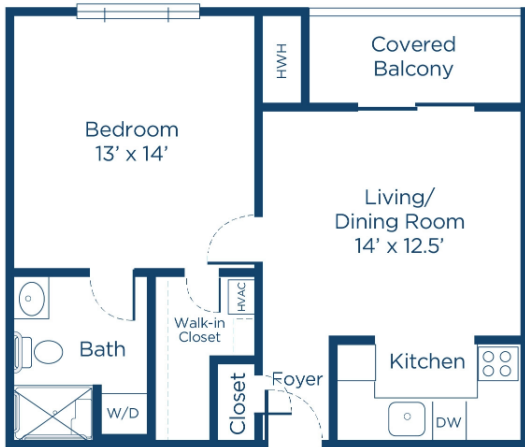
566 sq. ft. — 0 Bedroom/1 Bath



Assisted Living

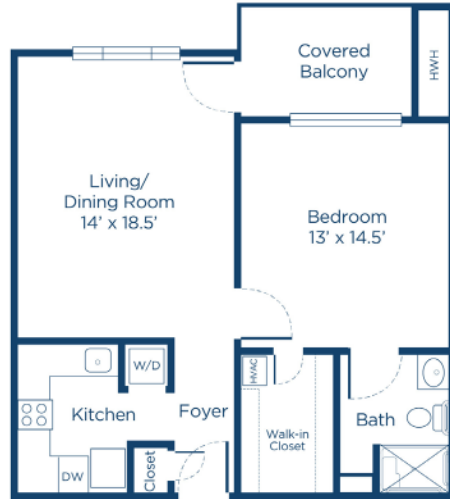
The Radcliffe

621 sq. ft. — 1 Bedroom/1 Bath



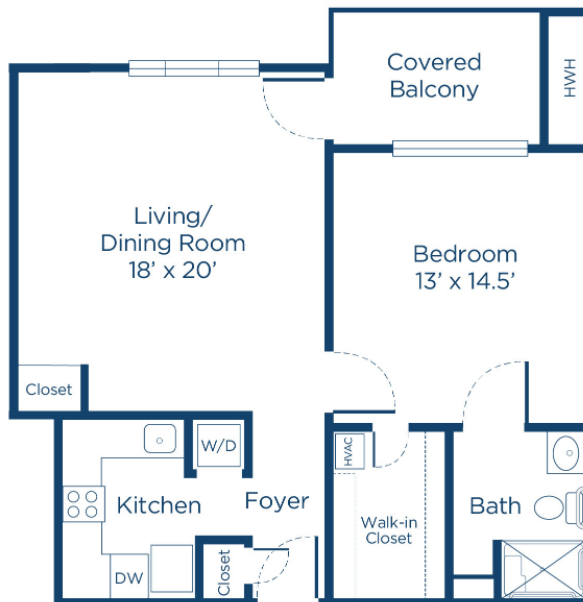
The Sterling

796 sq. ft. — 1 Bedroom/1 Bath



The Sherwood

900 sq. ft. — 1 Bedroom/1 Bath



It's what's on the inside that counts.

When you're considering a senior living community, there are certain "must-haves." A choice of spacious apartments. A compassionate staff. Inviting meals you can look forward to. Outstanding care whenever care is needed.

At MerryWood on Park, we agree that these are, indeed, "must-haves." But as a Bridge Senior Living community, being great at those things is just the starting point, not the finish line. Because a great life demands more – much more – than simply being "good enough."

A feast for the body and the soul.



If food is the foundation of healthy living, mealtime may just be the foundation of a healthy community. After all, breaking bread with friends and family has been a principal way of building relationships, stirring the heart, and sharpening the mind since time immemorial.

At MerryWood on Park, we take the joy of mealtime seriously. Our two dining options were specifically created to provide both outstanding menu options and memorable moments with friends.

Main Dining

Professional chefs prepare the meals at this upscale dining space. White linens, seasonal delights, and daily menu changes accentuate the dining experience. A perfect place to enjoy fresh flavors with a healthy side of lively conversation.

The Bistro

For a more casual experience, stop by The Bistro. Supervised by the same chefs who oversee The Main Dining, The Bistro offers lighter fare along with soups and sandwiches. Come, relax, and enjoy a bite and a laugh with some new friends while you swap stories.



Grow as a person, build stronger relationships, deepen your spirituality, expand your knowledge, and live with purpose.

All it takes is a single Spark.

Will you find outstanding amenities at MerryWood on Park? Of course. How about activities? More than space here will allow us to describe. But before we talk about those, let's talk about this: Discover Your Spark™.

Discover Your Spark was developed by Bridge Senior Living to help our residents rekindle old hobbies and ignite new passions — to understand what styles and types of activities they enjoy the most and then suggest new avenues of exploring those passions from all angles. So you not only stay active, but you also grow as a person, build stronger relationships, deepening your spirituality, expanding your knowledge, and living with purpose.

Our residents truly love Discover Your Spark and we believe you will, too. We also think you'll love all the wonderful amenities and activities you'll find at MerryWood on Park, including:



- *Housekeeping services*
- *In-unit washer and dryer*
- *Professional staff on duty daily*
- *Town car transportation*
- *Personalized care plans*
- *Full kitchens and patios*
- *Art center*
- *Spa*
- *Bistro*
- *Walking path*
- *Theater*
- *Library*
- *Beauty salon and barbershop*
- *Complimentary wi-fi*
- *Business center*
- *Emergency call system*

More than a touch of useful technology.

While it may be great fun to reminisce about days gone by, few of us would care to return to using party-line telephones or adjusting rabbit ears on the ole television.

At MerryWood on Park, we don't just welcome the march of technological progress – we join in the innovation parade.



From apps to virtual tours, here are a few of the ways we're making our residents' lives better via high-touch, high-tech solutions:

Bridge Senior Living App

MerryWood on Park is operated by Bridge Senior Living. So, naturally, we use the Bridge Senior Living App. Powered by LifeLoop, this app offers a central hub for residents, their families, friends, and staff to stay connected by sharing personalized activity schedules, photos, messages, and more.

Telehealth

The era of doctors making house calls is back – at least virtually. Not only do we offer technical support for your telehealth appointments, we even conduct appointments in the privacy of your room or apartment. It's convenient, safe, and thorough. Just what the doctor ordered.

Virtual Tours

While we'd love to have you visit MerryWood on Park in person, we know finding the time to do so may be a bit of a challenge. So instead of waiting for a hole in your schedule to open up, feel free to take a virtual tour. Our community has been digitally scanned and recreated in an easy-to-navigate 360-degree setting, so you can wander the halls, explore the rooms, and check out the grounds from the comfort of your own home.

Bridge Senior Living makes all the difference.

**BRIDGE
SENIOR
LIVING** MerryWood on Park is operated by Bridge Senior Living, recognized as one of the most innovative, senior living community management companies in the United States.

Beyond developing forward-thinking initiatives, such as the Bridge Senior Living App and Discover Your Spark™, Bridge Senior Living stands apart for its commitment to resident safety with the Bridge Safe program. Bridge Safe ensures that we have enhanced safety protocols in place to protect our residents and the resources to put those protocols into practice. From enhanced cleaning and guest screenings to daily check-ins to enhanced air filtration, Bridge Safe helps keep MerryWood on Park as happy a community as possible.



Bridge Senior Living continues to pursue improvements and innovations across all aspects of community life. We're proud to be part of their family and welcome the opportunity to tell you more about how Bridge makes life at MerryWood on Park better every day.



An honest discussion about financial matters.

At MerryWood on Park, we understand that the costs associated with moving into a senior living community are one of the main concerns for potential residents and their families.

So we're very upfront with our prices and invite you to contact one of our expert associates with any questions you may have.

Apartments at MerryWood on Park start at \$2,995 per month for Independent Living, and \$5,995 per month for Assisted Living. These prices

include rent, meals, utilities, maintenance, and housekeeping. Plus, you don't have to pay any property or real estate taxes.

There are many options when it comes to financing a life at MerryWood on Park, including retirement savings, proceeds from selling your existing house, selling stocks and securities, etc. The options aren't quite limitless, but they are numerous. So again, we invite you to contact one of our experts to discuss matters further. And it truly will be a discussion and not a sales call. We promise.





What else would you like to know?

Seriously, we'd really love to hear from you and help you learn even more about what makes MerryWood on Park such a wonderful place. Yes, everyone here may be a bit biased, but we believe residents and staff alike would tell you that being a part of this community was the right decision for them.

Is it the right decision for you? That's not for us to say. After all, everyone's needs and situations are different. But you'll never know for sure unless you stop by and take a look around for yourself, which you are cordially invited to do.

To schedule your own visit at MerryWood on Park, please call 866-421-1920. We promise it will be a zero-pressure experience.

Take a tour, meet some residents, meet the staff, ask all the questions you like – even enjoy lunch if you time it right! Just give us a call and we'll make it happen.

To schedule a visit or for more information about MerryWood on Park, call 866-421-1920.

**MerryWood on Park
3600 Park Rd.
Charlotte, NC 28209**